

KVE



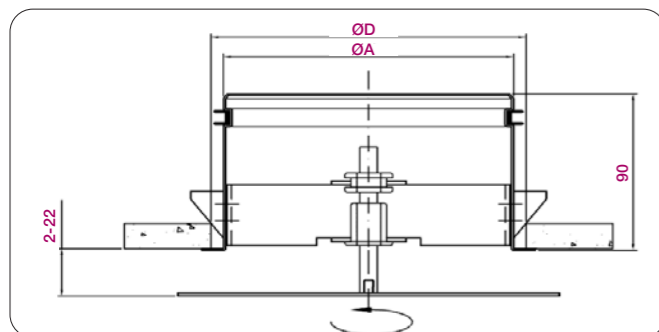
KVE-Q

Extract and supply air nozzles

Product description

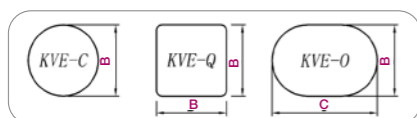
Air terminal unit for supply and extract air systems, **KVE Series**, KOOLAIR, can be ceiling or wall mounted. With a highly aesthetic design and available in different geometric shapes, including round, square, oval, and in multiple RAL paint finishings to be defined or in stainless steel finishing, this unit boasts a clearly differentiating personality which sets apart from the rest of conventional air vents on the market, highlighted by a simple and quick installation with hanging straps. Core height can be adjusted for manual balancing based on the site requirements; an automatic constant air volume KCRK regulator can be embedded in the connection neck.

General dimensions



Diffuser	Ø A	B	C	ØD
100	98	150	200	110
125	123	175	225	135
160	158	210	260	170

Unit in mm.

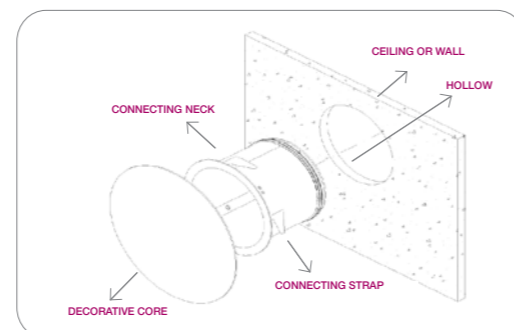


Accessories

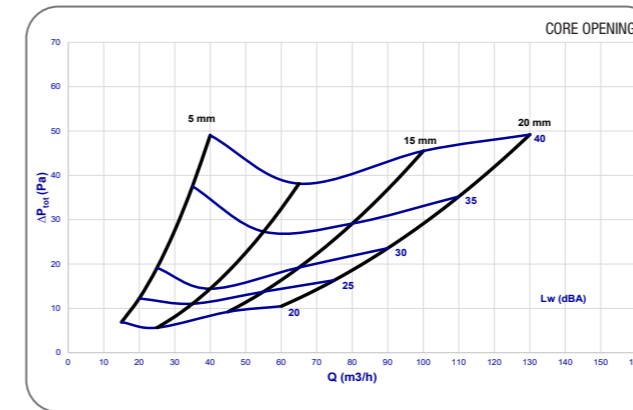
PCDL. Circular removable plenum box with side connection.
A. Internal insulation in the plenum box.
KCRK-BR. Automatic mechanical regulator for constant flow. Includes additional neck if the regulation is directly associated with the KVE unit.

Models

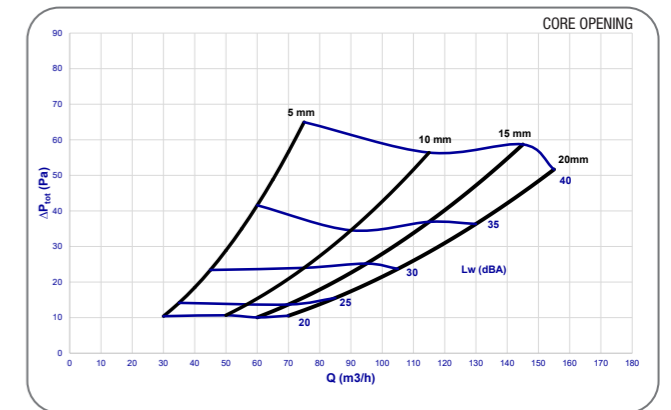
KVE-Q. Square extract and supply air nozzle.
KVE-C. Round extract and supply air nozzle.
KVE-O. Oval extract and supply air nozzle.



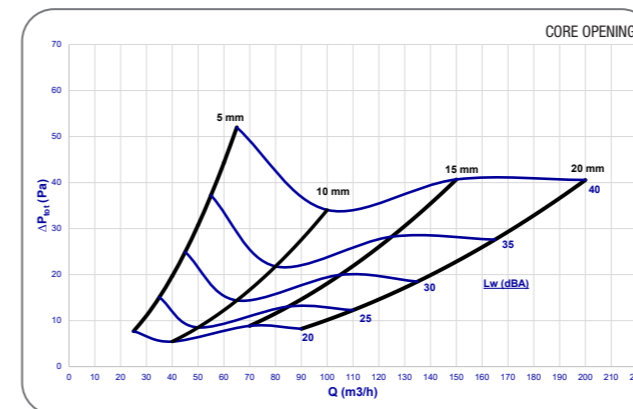
Technical selection drawings



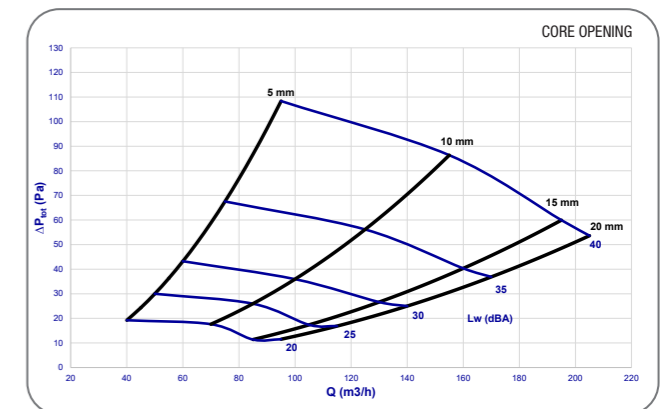
KVE-100 (Supply air flow data)



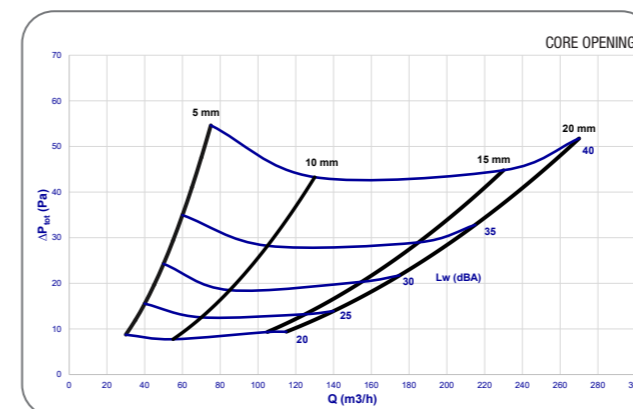
KVE-100 (Return air flow data)



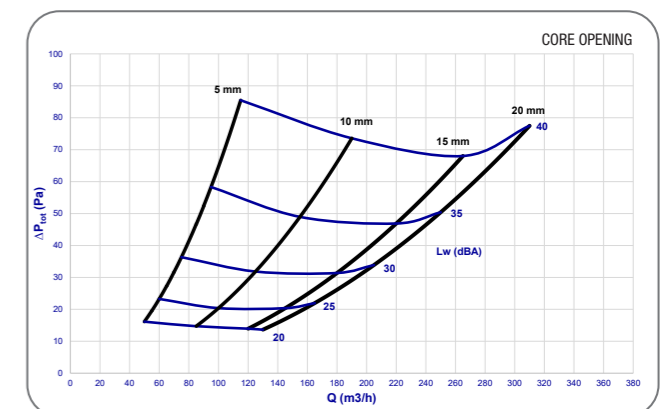
KVE-125 (Supply air flow data)



KVE-125 (Return air flow data)



KVE-160 (Supply air flow data)



KVE-160 (Return air flow data)

SYMBOLS

Q (m³/h): Air flow.

L_{WA} [dB(A)]: Sound power level in dB(A)

ΔP (Pa): Pressure drop.